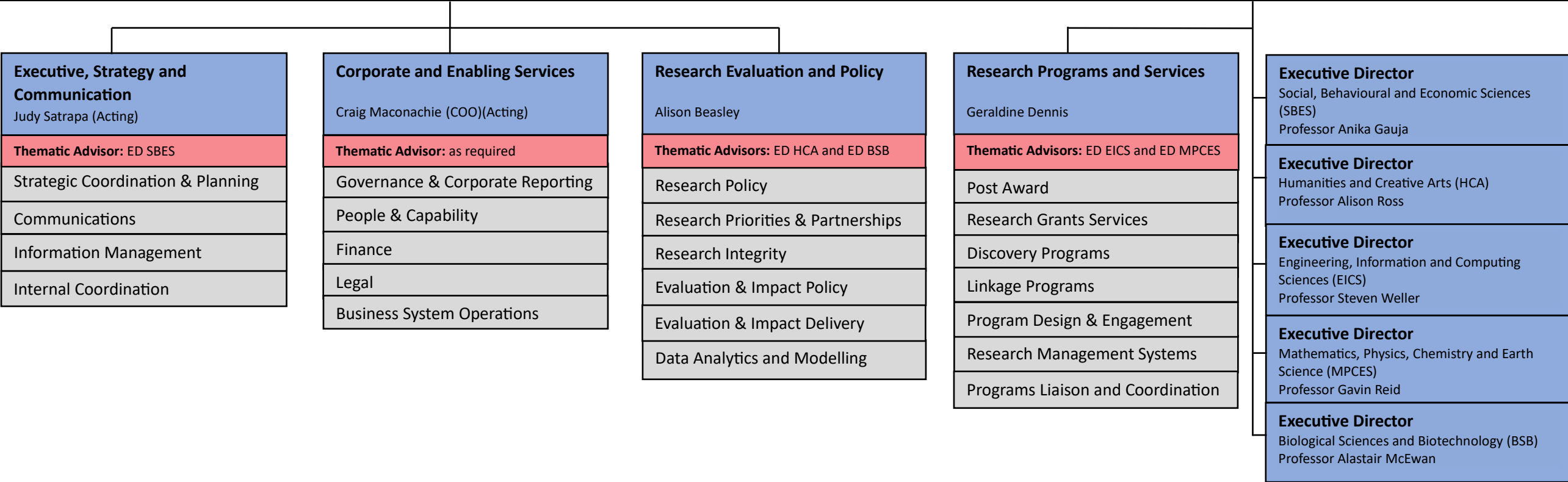


**Chief Executive Officer** Professor Ute Roessner Executive Officer: Connie Smith

**\*Deputy Chief Executive Officer** Claire Forsyth (Acting)

**Chief Research Officer** Professor Christina Twomey



\*The Deputy CEO is the second-in-command to the CEO. In periods of absence from the CEO (including for work related international travel) the Deputy CEO will act in the position of CEO.